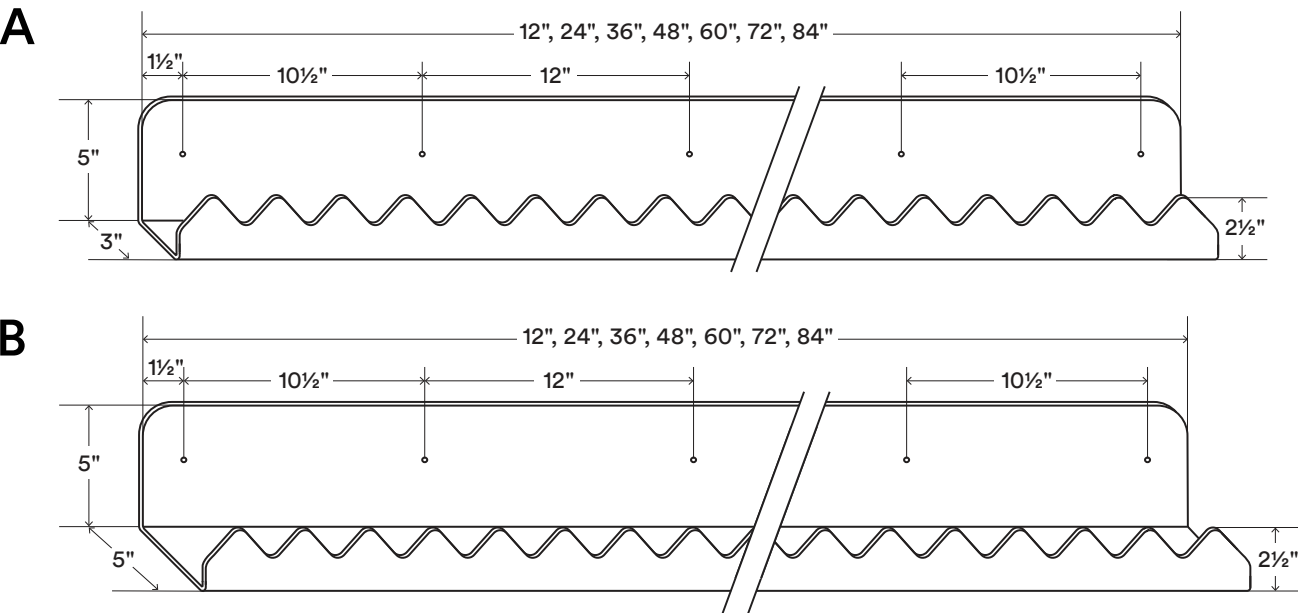


Mountain Picture Ledge

Load Capacity (lbs per linear foot)
12–50*

Shelf Depth Range (in)
3, 5



About Mountain Picture Ledge

This radical shelf is constructed with 14 gauge hot-rolled steel

Custom depths and lengths available upon request, some limitations apply.

Manufactured from top-quality American steel made with 70% recycled content.

Designed & crafted by radically talented humans right here in the U.S. of Awesome.

Shelfology radically recycles all production metal, wood and cardboard waste.

*** WARNING:** All shelves must be installed properly into studs or with wall anchors. Failure to do so may result in saggy shelves, falling objects, or even injury.

****** Drawings are representations only and not to scale.

© Shelfology 2025

Figure	Load (per linear foot)	Height	Depth	Length	Weight (per linear foot)
A	50 lbs	5"	3"	12", 24", 36", 48", 60", 72", 84"	2.46 lbs
B	12 lbs	5"	5"	12", 24", 36", 48", 60", 72", 84"	3.37 lbs

