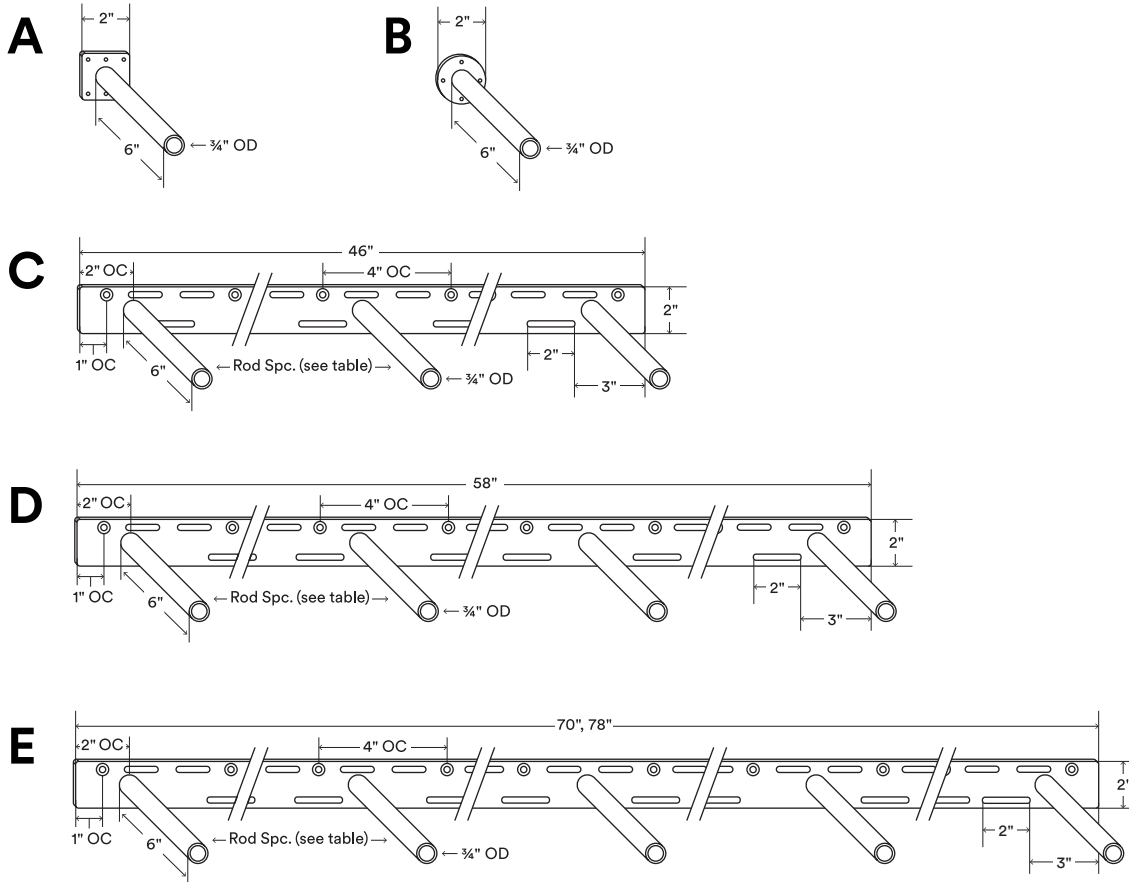


# Glenn MD

Load Capacity (lbs)  
200–1000\*

Shelf Depth Range (in)  
7–10\*\*



## About Glenn MD

Back bar is 1/4" thick, hot-rolled steel.

Countersunk fastener holes are set 1" OC from each end and continue 4" OC down the length of the bracket.

Countersunk fastener holes are 3/16" outside diameter (OD)

Rods are inset 2" on center (OC) from left and right bar end.

Request custom rods a 1/2" shorter than shelf depth.

Supports up to 200 lbs. per hollow rod when correctly mounted.\*

Manufactured from top-quality American steel made with 70% recycled content.

Designed and produced in beautiful middle-of-nowhere Idaho, with sweat, tears, and Ameri-quality awesomeness.

Shelfology radically recycles all production metal, wood and cardboard waste.

**\*WARNING:** All brackets must be installed into studs or posts. Failure to do so may result in saggy shelves, falling objects, or even injury.

\*\*Request custom rod length for shelf depth applications below 7".

\*\*\*Drawings are representations only and not to scale.

© Shelfology 2023



Figure	Rod Count	Load	Back bar Length	Rod Spacing (OC)	Mantel Length	Mantel Depth**	Mantel Thickness
A	1	200 lbs	2"	NA	NA	7"–10"	2¼"–3¼"
B	1	200 lbs	2"	NA	NA	7"–10"	2¼"–3¼"
C	3	600 lbs	46"	21"	48"–60"	7"–10"	2¼"–3¼"
D	4	800 lbs	58"	18"	60"–72"	7"–10"	2¼"–3¼"
E	5	1000 lbs	70"	16½"	72"–80"	7"–10"	2¼"–3¼"
E	5	1000 lbs	78"	18½"	80"–96"	7"–10"	2¼"–3¼"

