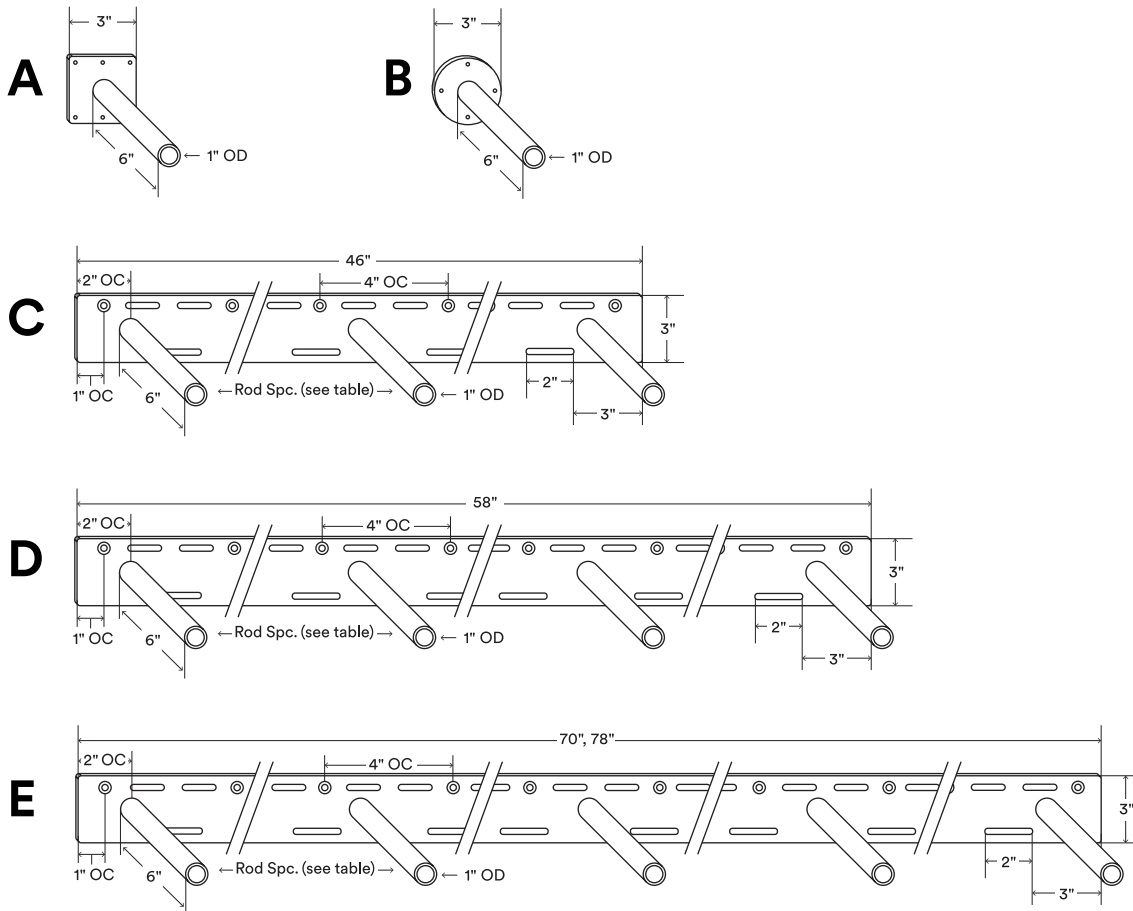


Glenn HD

Load Capacity (lbs)
300–1500*

Mantel Depth Range (in)
7–14**



About Glenn HD

Back bar is 1/4" thick, hot-rolled steel.

Countersunk fastener holes are set 1" OC from each end and continue 4" OC down the length of the bracket (not including single rods).

Countersunk fastener holes are 3/16" outside diameter (OD).

Rods are inset 2" on center (OC) from left and right bar end.

Request custom rods a 1/2" shorter than mantel depth.

Supports up to 300 lbs. per hollow rod when correctly mounted*

Manufactured from top-quality American steel made with 70% recycled content.

Designed and produced in beautiful middle-of-nowhere Idaho, with sweat, tears, and Ameri-quality awesomeness.

Shelfology radically recycles all production metal, wood and cardboard waste.

***WARNING:** All brackets must be installed into studs or posts. Failure to do so may result in saggy shelves, falling objects, or even injury.

**Request custom rod length for mantel depth applications below 7".

***Drawings are representations only and not to scale.

© Shelfology 2023



| Figure | Rod Count | Load | Back bar Length | Rod Spacing (OC) | Mantel Length | Mantel Depth** | Mantel Thickness |
|--------|-----------|----------|-----------------|------------------|---------------|----------------|------------------|
| A | 1 | 300 lbs | 3" | NA | NA | 7"–14" | 3 1/2" + |
| B | 1 | 300 lbs | 3" | NA | NA | 7"–14" | 3 1/2" + |
| C | 3 | 900 lbs | 46" | 21" | 48"–60" | 7"–14" | 3 1/2" + |
| D | 4 | 1200 lbs | 58" | 18" | 60"–72" | 7"–14" | 3 1/2" + |
| E | 5 | 1500 lbs | 70" | 16 1/2" | 72"–80" | 7"–14" | 3 1/2" + |
| E | 5 | 1500 lbs | 78" | 18 1/2" | 80"–96" | 7"–14" | 3 1/2" + |

