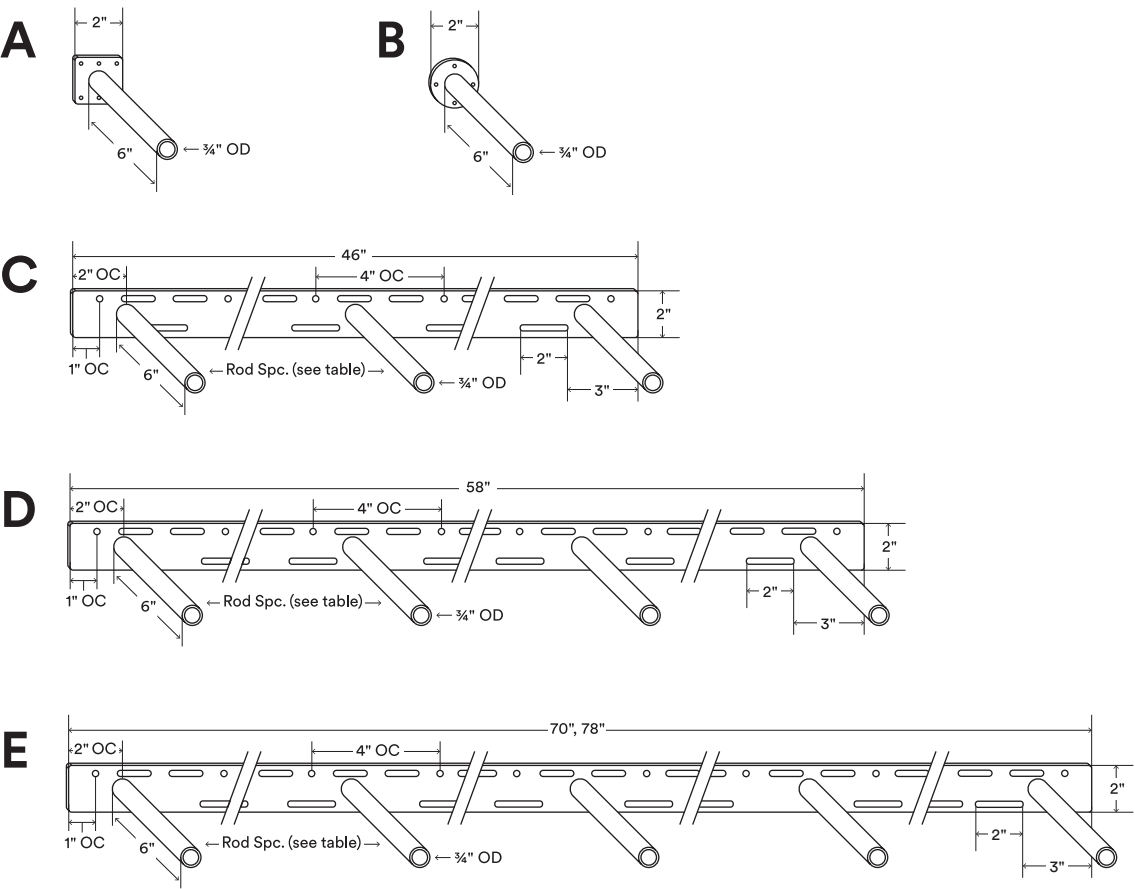


Glenn MD

Load Capacity (lbs)
200–1000*

Shelf Depth Range (in)
7–10**



About Glenn MD

Back bar is 1/4" thick, hot-rolled steel.

Fastener holes are set 1" OC from each end and continue 4" OC down the length of the bracket.

Rods are inset 2" on center (OC) from left and right bar end.

Request custom rods a 1 1/2" shorter than shelf depth.

Supports up to 200 lbs. per hollow rod when correctly mounted.*

Manufactured from top-quality American steel made with 70% recycled content.

Designed & engineered in the U.S. of Awesome.

Shelfology radically recycles all production metal, wood and cardboard waste.

***WARNING:** All brackets must be installed into studs or posts. Failure to do so may result in saggy shelves, falling objects, or even injury.

****Request custom rod length for shelf depth applications below 7".**

*****Drawings are representations only and not to scale.**

© Shelfology 2025

| Figure | Rod Count | Load | Back bar Length | Rod Spacing (OC) | Mantel Length | Mantel Depth** | Mantel Thickness |
|--------|-----------|----------|-----------------|------------------|---------------|----------------|------------------|
| A | 1 | 200 lbs | 2" | NA | NA | 7"–10" | 2 1/4"–3 1/4" |
| B | 1 | 200 lbs | 2" | NA | NA | 7"–10" | 2 1/4"–3 1/4" |
| C | 3 | 600 lbs | 46" | 21" | 48"–60" | 7"–10" | 2 1/4"–3 1/4" |
| D | 4 | 800 lbs | 58" | 18" | 60"–72" | 7"–10" | 2 1/4"–3 1/4" |
| E | 5 | 1000 lbs | 70" | 16 1/2" | 72"–80" | 7"–10" | 2 1/4"–3 1/4" |
| E | 5 | 1000 lbs | 78" | 18 1/2" | 80"–96" | 7"–10" | 2 1/4"–3 1/4" |

