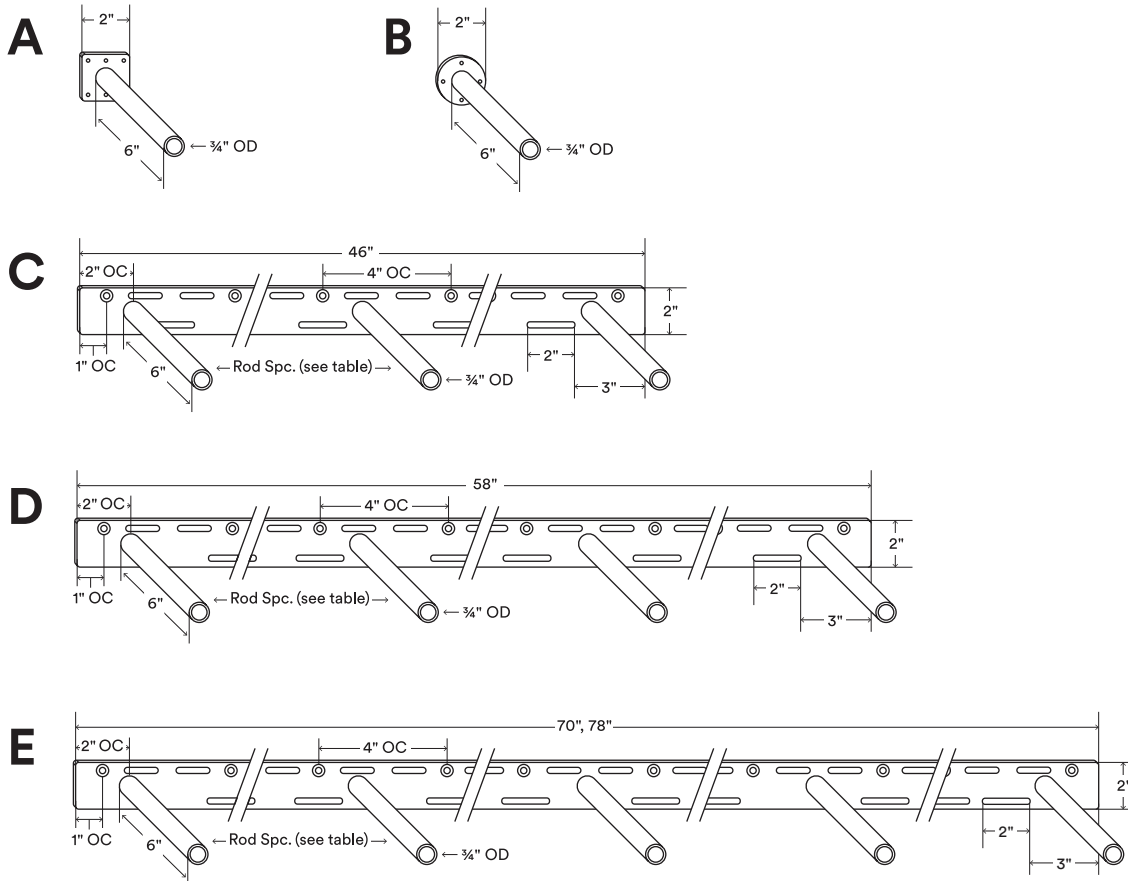


# Glenn MD

Load Capacity (lbs)  
200–1000\*

Shelf Depth Range (in)  
7–10\*\*



## About Glenn MD

Back bar is 3/4" thick, hot-rolled steel.

Countersunk fastener holes are set 1" OC from each end and continue 4" OC down the length of the bracket.

Countersunk fastener holes are 3/16" outside diameter (OD)

Rods are inset 2" on center (OC) from left and right bar end.

Request custom rods a 1/2" shorter than shelf depth.

Supports up to 200 lbs. per hollow rod when correctly mounted.\*

Manufactured from top-quality American steel made with 70% recycled content.

Designed & engineered in the U.S. of Awesome.

Shelfology radically recycles all production metal, wood and cardboard waste.

**\*WARNING:** All brackets must be installed into studs or posts. Failure to do so may result in saggy shelves, falling objects, or even injury.

\*\*Request custom rod length for shelf depth applications below 7".

\*\*\*Drawings are representations only and not to scale.

© Shelfology 2025

| Figure | Rod Count | Load     | Back bar Length | Rod Spacing (OC) | Mantel Length | Mantel Depth** | Mantel Thickness |
|--------|-----------|----------|-----------------|------------------|---------------|----------------|------------------|
| A      | 1         | 200 lbs  | 2"              | NA               | NA            | 7"–10"         | 2 1/4"–3 1/4"    |
| B      | 1         | 200 lbs  | 2"              | NA               | NA            | 7"–10"         | 2 1/4"–3 1/4"    |
| C      | 3         | 600 lbs  | 46"             | 21"              | 48"–60"       | 7"–10"         | 2 1/4"–3 1/4"    |
| D      | 4         | 800 lbs  | 58"             | 18"              | 60"–72"       | 7"–10"         | 2 1/4"–3 1/4"    |
| E      | 5         | 1000 lbs | 70"             | 16 1/2"          | 72"–80"       | 7"–10"         | 2 1/4"–3 1/4"    |
| E      | 5         | 1000 lbs | 78"             | 18 1/2"          | 80"–96"       | 7"–10"         | 2 1/4"–3 1/4"    |

