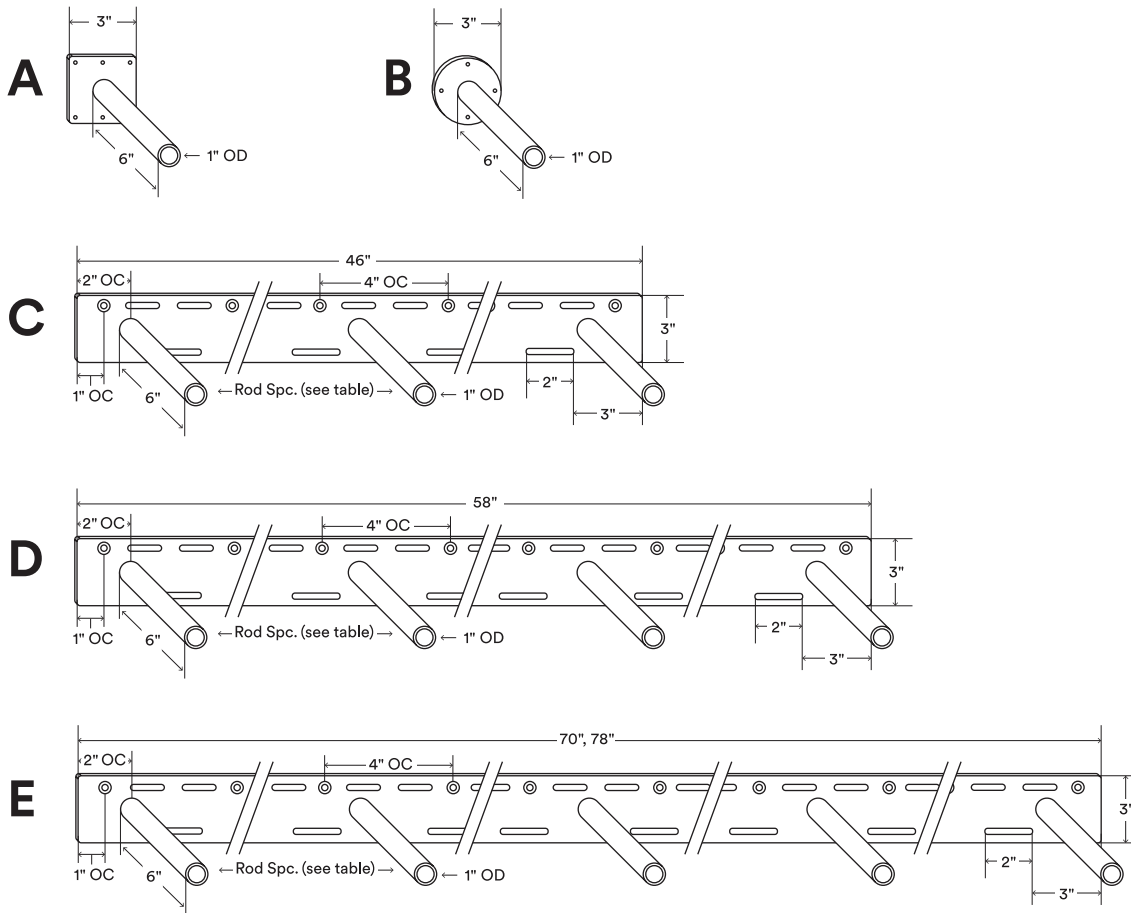


Glenn HD

Load Capacity (lbs)
300–1500*

Mantel Depth Range (in)
7–14**



About Glenn HD

Back bar is ¼" thick, hot-rolled steel.

Countersunk fastener holes are set 1" OC from each end and continue 4" OC down the length of the bracket (not including single rods).

Countersunk fastener holes are ⅞" outside diameter (OD).

Rods are inset 2" on center (OC) from left and right bar end.

Request custom rods a 1½" shorter than mantel depth.

Supports up to 300 lbs. per hollow rod when correctly mounted*

Manufactured from top-quality American steel made with 70% recycled content.

Designed & engineered in the U.S. of Awesome.

Shelfology radically recycles all production metal, wood and cardboard waste.

***WARNING:** All brackets must be installed into studs or posts. Failure to do so may result in saggy shelves, falling objects, or even injury.

**Request custom rod length for mantel depth applications below 7".

***Drawings are representations only and not to scale.

© Shelfology 2025

Figure	Rod Count	Load	Back bar Length	Rod Spacing (OC)	Mantel Length	Mantel Depth**	Mantel Thickness
A	1	300 lbs	3"	NA	NA	7"–14"	3½" +
B	1	300 lbs	3"	NA	NA	7"–14"	3½" +
C	3	900 lbs	46"	21"	48"–60"	7"–14"	3½" +
D	4	1200 lbs	58"	18"	60"–72"	7"–14"	3½" +
E	5	1500 lbs	70"	16½"	72"–80"	7"–14"	3½" +
E	5	1500 lbs	78"	18½"	80"–96"	7"–14"	3½" +

