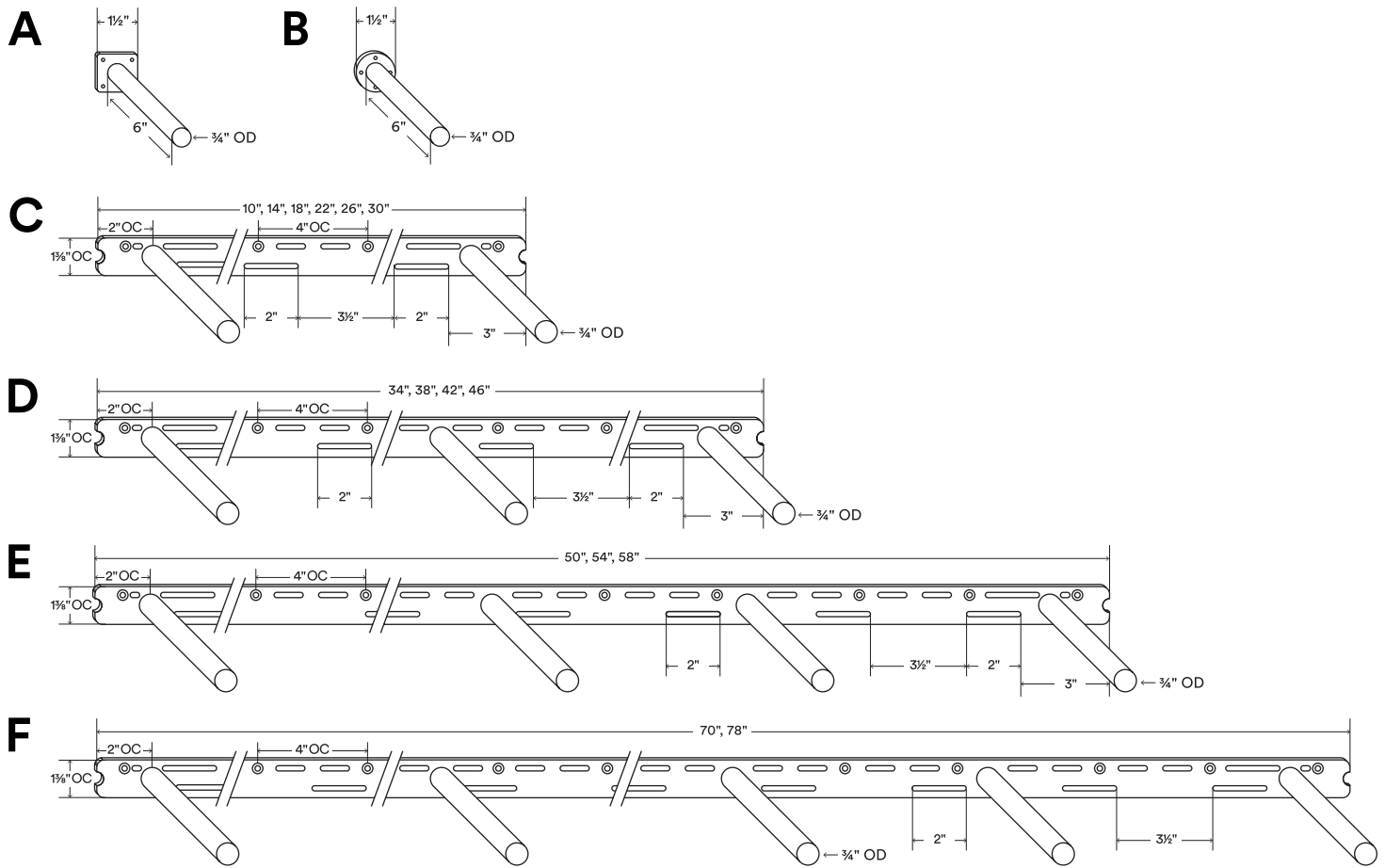


Aksel HD

Load Capacity (lbs)
80-400*

Shelf Depth Range (in)
7-14**



About Aksel HD

Back bar is 1/4" thick, hot-rolled steel.

Rods are inset 2" on center (OC) from left and right bar end.

Request custom rods 1/2" shorter than shelf depth.

Supports up to 80 lbs. per solid rod when correctly mounted.*

Manufactured from top-quality American steel made with 70% recycled content.

Designed and produced in beautiful middle-of-nowhere Idaho, with sweat, tears, and Ameri-quality awesomeness.

Shelfology radically recycles all production metal, wood, and cardboard waste.

***WARNING:** All brackets must be installed into studs or posts. Failure to do so may result in saggy shelves, falling objects, or even injury.

**Request custom rod length for shelf depth applications below 7".

***Drawings are representations only and not to scale.

© Shelfology 2023

Figure	Rod Ct	Style	Load	Back bar Ln	Rod Spc (OC)	Weight (lbs)	Shelf Ln	Rod Ln	Shelf Thickness
A	1	HD	80lbs	1" (Square)	NA	0.4	NA	6"	1 1/4"
B	1	HD	80lbs	1" (Round)	NA	0.4	NA	6"	1 1/4"
C	2	HD	160 lbs	10"	6"	4.4	12"-16"	6"	1 1/4"
C	2	HD	160 lbs	14"	10"	5.0	16"-20"	6"	1 1/4"
C	2	HD	160 lbs	18"	14"	5.7	20"-24"	6"	1 1/4"
C	2	HD	160 lbs	22"	18"	6.3	24"-28"	6"	1 1/4"
C	2	HD	160 lbs	26"	22"	6.9	28"-32"	6"	1 1/4"
C	2	HD	160 lbs	30"	26"	7.6	32"-36"	6"	1 1/4"
D	3	HD	240 lbs	34"	15"	9.6	36"-40"	6"	1 1/4"
D	3	HD	240 lbs	38"	17"	10.2	40"-44"	6"	1 1/4"
D	3	HD	240 lbs	42"	19"	10.9	44"-48"	6"	1 1/4"
D	3	HD	240 lbs	46"	21"	11.5	48"-52"	6"	1 1/4"
E	4	HD	320 lbs	50"	15 3/8"	13.5	52"-56"	6"	1 1/4"
E	4	HD	320 lbs	54"	16 3/8"	14.2	56"-60"	6"	1 1/4"
E	4	HD	320 lbs	58"	18"	14.8	60"-72"	6"	1 1/4"
F	5	HD	400 lbs	70"	16 1/2"	18.1	72"-80"	6"	1 1/4"
F	5	HD	400 lbs	78"	18 1/2"	19.4	80"-87"	6"	1 1/4"

