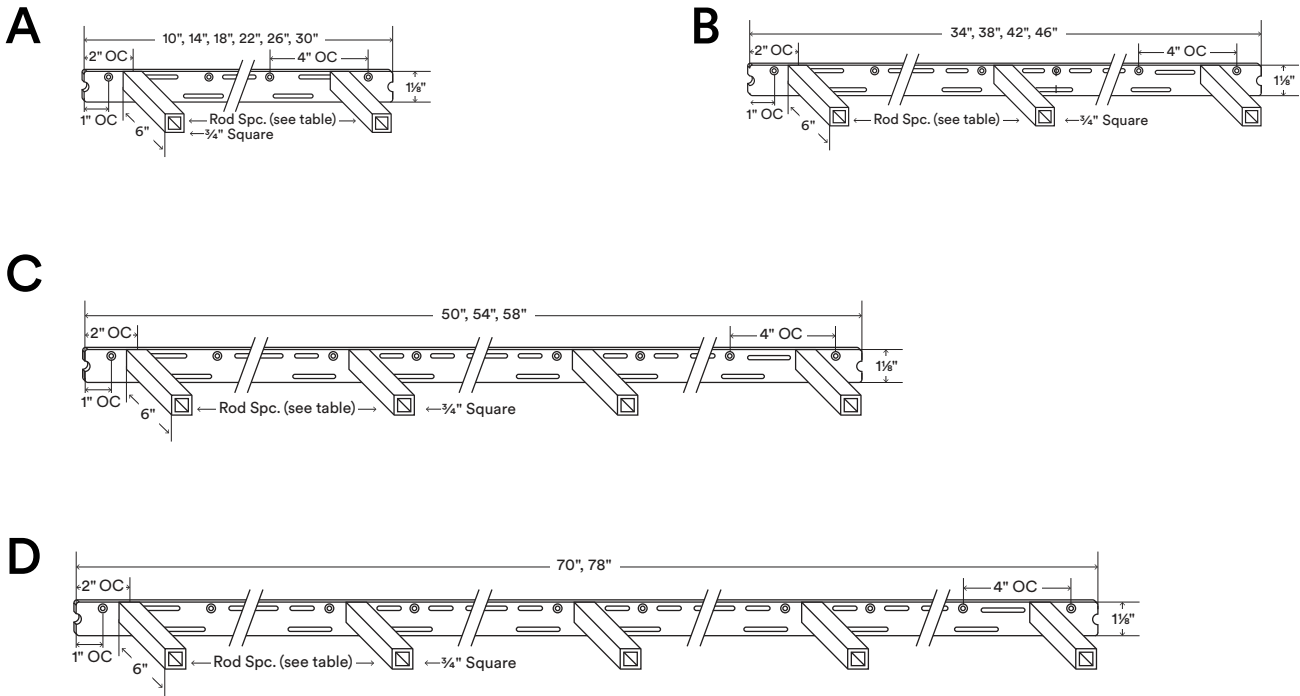


Aksel Hollow Core MD

Load Capacity (lbs)
170–425*

Shelf Depth Range (in)
7–14



About Aksel Hollow Core MD

Back bar is 1/4" thick, hot-rolled steel.

Fastener holes are set 1" OC from each end and continue 4" OC down the length of the bracket.

Countersunk fastener holes are 3/16" outside diameter (OD).

Rods are inset 2" on center (OC) from left and right bar end.

Rods are 6" from backbar face.

Custom rod lengths available upon request.

Supports up to 85 lbs. per hollow rod when correctly mounted*

Designed & engineered in the U.S. of Awesome.

Shelfology radically recycles all production metal, wood and cardboard waste

***WARNING:** All brackets must be installed into studs or posts. Failure to do so may result in saggy shelves, falling objects, or even injury.

**Drawings are representations only and not to scale.

Made In Vietnam.

© Shelfology 2025

Figure	Rod Count	Load	Back bar Length	Rod Spc (OC)	Shelf Length	Shelf Depth	Shelf Thickness
A	2	170 lbs	10"	6"	12"–16"	7"–14"	3/4"–3"
A	2	170 lbs	14"	10"	16"–20"	7"–14"	3/4"–3"
A	2	170 lbs	18"	14"	20"–24"	7"–14"	3/4"–3"
A	2	170 lbs	22"	18"	24"–28"	7"–14"	3/4"–3"
A	2	170 lbs	26"	22"	28"–32"	7"–14"	3/4"–3"
A	2	170 lbs	30"	26"	32"–36"	7"–14"	3/4"–3"
B	3	255 lbs	34"	15"	36"–40"	7"–14"	3/4"–3"
B	3	255 lbs	38"	17"	40"–44"	7"–14"	3/4"–3"
B	3	255 lbs	42"	19"	44"–48"	7"–14"	3/4"–3"
B	3	255 lbs	46"	21"	48"–52"	7"–14"	3/4"–3"
C	4	340 lbs	50"	15"	52"–56"	7"–14"	3/4"–3"
C	4	340 lbs	54"	16"	56"–60"	7"–14"	3/4"–3"
C	4	340 lbs	58"	18"	60"–72"	7"–14"	3/4"–3"
D	5	425 lbs	70"	16 1/2"	72"–80"	7"–14"	3/4"–3"
D	5	425 lbs	78"	18 1/2"	80"–96"	7"–14"	3/4"–3"

